

Alignment Accessories



Remote Indicators



Hunter Remote Indicators Speed Alignment Service

Hunter Remote Indicators are designed to provide the operator with complete control while making adjustments to the vehicle.

- View measurements with the touch of one key.
- Functions as a remote control.
- Eliminates need to use a separate remote control under the vehicle.
- Allows the technician to perform rolling compensation when the console is out of view.

Easily Record Inspection Measurements With the Cordless Plus Remote Indicator

Hunter's Plus Remote Indicator lets you document your inspection. Simply select the measurement button and dial in the measurement with the measurement input wheel. Tire pressure, tire temperature, tread depth, ride height measurements and frame angle are automatically sent to the alignment console.



30-418-1 Cordless* Plus Remote Indicator Easily Records Tire and Suspension Measurements

Hunter's Plus Remote Indicator refines your alignment service by measuring tire temperature and frame angle and letting you enter in values for tire pressure, tread depth and ride height without repeated trips back to the console.

For use with WA Series and Series 811 Aligners using WinAlign® Alignment Software version 9.0 and greater.

- Includes: 20-2056-1 Hanger kit with remote hanger recharge
- 38-944-3 30-foot cable
- 27-13-2 Tire temperature probe



30-421-1 Cordless* Icon Remote Indicator

Cordless Icon Remote Indicator is compatible with WA Series, Series 811, Series 611 with USB support and PA100 Aligners.

For use with WinAlign Alignment Software version 1.5.1 and greater.

- Includes: 20-2056-1 Hanger kit with remote hanger recharge
- 38-944-3 30-foot cable



30-419-1 Icon Remote Indicator

Icon Remote Indicator is compatible with WA Series, Series 111/211/311/411/511/611/811 and PA100 Aligners.

For use with WinAlign Alignment Software version 1.5.1 and greater

- Includes: 20-2055-1 Hanger kit
- 38-944-3 30-foot cable



*Cordless communication requires 20-2072-1 XF2 Pod Kit.



Today, over 10 million vehicles on the road require SAS reset after alignment service. CodeLink recalibrates the vehicle's steering angle sensor (SAS) (as required by OEM) to match the final thrust angle of the vehicle. This ensures the vehicle's electronic stability control (ESC) functions properly. Failure to perform the manufacturer recommended SAS reset procedure may cause several conditions that could result in comebacks.

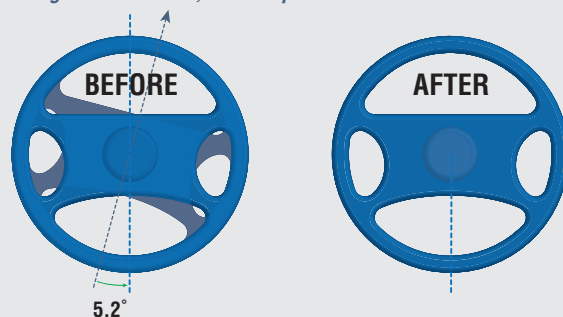


CodeLink Tool shown.

CodeLink Resets Steering Angle Sensor (SAS) Quickly and Easily

- ✓ No expensive tools or software needed
- ✓ Fully integrated to save time
- ✓ Properly align with confidence

Steering wheel is level, but computer assumes this direction of travel



CodeLink resets SAS to physical wheel location (0°)

After reset

Physical wheel (level)

Physical wheel (level)

SAS assumption (5.2°)

SAS assumption (level)

20-2333-1 BMW 20-Pin Cable

For use with CodeLink. Required for model year 2001 and older BMW models with Dynamic Stability Control (DSC).



20-2150-1 CodeLink with XF2 Pod Kit*

Data link from WinAlign to the vehicle OBDII (J1962) connector. Order this kit if you want wireless capability and do not currently own an XF2 Pod Kit. Includes CodeLink device, XF2 wireless Pod Kit, and J1962 cable (also includes a burndy cable that may be used to connect the CodeLink device to the alignment console).



20-2151-1 CodeLink without XF2 Pod Kit*

Data link from WinAlign to the vehicle OBDII (J1962) connector. Order this kit if you currently own an XF2 Pod Kit or you do not want wireless capability. Includes CodeLink device and J1962 cable (includes a burndy cable that may be used to connect the CodeLink device to the alignment console).



**Requires WinAlign version 11.0 or greater software. CodeLink is not compatible with PA consoles.*

Ride Height Measurements

Live Ride Height Measurement and Adjustment System for HS401 and DSP600 Sensors

Ride height can change over time as a vehicle ages. These changes in ride height can prevent proper alignment.

- ✓ Hunter Live Ride Height Adjustment allows the technician to easily measure, adjust, jounce and confirm ride height.
- ✓ Accurately adjust ride height in just one trip around the car.
- ✓ Make ride height adjustments in half the time.
- ✓ Integrate with WinAlign Tuner™ Software to better service modified vehicles.
- ✓ Use the Suspension Body Dimension Audit to determine alignability or need for collision repairs.

Suspension Body Dimension Audit Option

The patented Suspension Body Dimension Audit (SBDA) option provides a quick audit to determine if the vehicle is alignable and identifies the potential need for body shop procedures by measuring ride height, body angle, body wheel offset, body wheel setback and body roll.

Requires 20-2050-1 Live Ride Height Measurement Kit and WinAlign® Software version 9.0 or greater.

Electronic Ride Height Measurement Option for DSP500 Sensors

Patented DSP500 Ride Height Measurement System provides ride height measurement and Suspension Body Dimension Audit (SBDA) measurements.



20-2050-1 Live Ride Height Measurement Kit

Includes four targets used for measuring ride height.

Kit 20-2050-1 requires a WA Series or Series 811 console with WinAlign Software version 9.0 or greater and HS401 or DSP600 sensors.

20-1885-1 Hand-Held Ride Height Remote Kit

Measures ride height and functions as a remote for operating the aligner console during ride height measurement procedures.



Kit 20-1885-1 is compatible with WA Series and Series 811 consoles shipped after September 1, 2004. Series 811 consoles shipped prior to September 1, 2004 require kit 20-1928-1. Also requires WinAlign® software version 7.2.1 or greater.



Wheel-Off Adjustment Feature & Kits



Make Alignment Adjustments Fast and Accurately... With the Wheel Removed!

- ✓ Applicable on more than 30% of the vehicles in production.
- ✓ Eliminate guesswork by using WinAlign® Software Power Tools to make adjustments with the wheel out of the way.
- ✓ An adjustment feature that will get used everyday.

WinAlign Software allows the technician to access the Wheel-Off Adjustment feature from any adjustment display. Once activated, the technician simply follows the illustrated instructions to complete the correction.

The alignment target or sensor is attached to the hub using adaptors that mount on the hub bolts or magnetically to the rotor surface.



20-1978-1 Wheel-Off Adjustment Kit

Includes two adaptors that mount directly to the hub bolts once the wheel is removed. Requires WinAlign Software version 9.0 or greater.



20-1979-1 Wheel-Off Adjustment Kit

Includes two magnetic adaptors that mount directly to the rotor once the wheel is removed. Requires WinAlign Software version 9.0 or greater and 20-1978-1.

Wheel Adaptors and Accessories

Self-Centering Wheel Adaptors

For Hunter HS401, HS400, DSP600 and DSP500 Wheel Alignment Sensors

**Extended range fits 10" to 24.5"
(254 mm to 622 mm) rims**

20-2375-1 NEW Sensor Dual Purpose Adaptor Mount

Set of four brackets that may be mounted to HS401 or HS400 columns, alignment consoles or mounted in a horizontal position for use on RX racks. The brackets will hold self-centering wheel adaptors and sensors/targets (not suitable for cordless sensors). Compatible only with self-centering adaptors, 175-321-1, and 175-325-1.

175-325-1 Self-Centering Wheel Adaptor

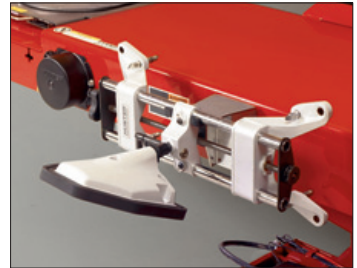
DSP600 and HS400 Hexagonal or HS401 High-Definition Alignment Targets remain centered while the technician clamps the adaptor to the rim.

175-321-1 Self-Centering Wheel Adaptor

Hunter's Conventional DSP500 Alignment Sensors remain centered while the technician clamps the adaptor to the rim. Center castings may be adjusted for a clear line of sight between the front toe sensors.

20-1789-1 Tire Clamp Adaptor

Clamps effectively fasten wheel adaptors on tires with an outside dimension of 21" (533 mm) to 40" (1016 mm). Ideal for rims without rim lips or when space between tire and rim is limited. Grips onto tire treads and protects alloy wheels from damage. Required for use with PAX System Wheels. Compatible with 175-321-1 and 175-325-1 Self-Centering Adaptors.



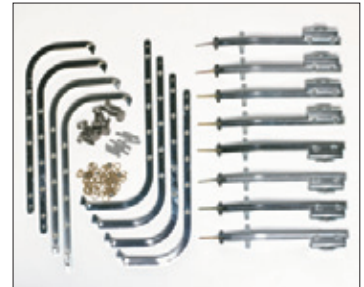
20-1558-1 Tire Clamp Adaptor

Compatible only with 175-200-1, 175-285-1, 175-304-1 and 175-305-1 Self-Centering Adaptors. Grips tire tread (21" - 40" tire O.D.).



20-1559-1 Upgrade Kit for Tire Clamp Adaptor Kit 20-1108-1

Replaces the current tire hooks on Kit 20-1108-1, increasing maximum tire range from 28 to 40 inches. Compatible only with 175-200-1, 175-285-1, 175-304-1 and 175-305-1 Self-Centering Adaptors.

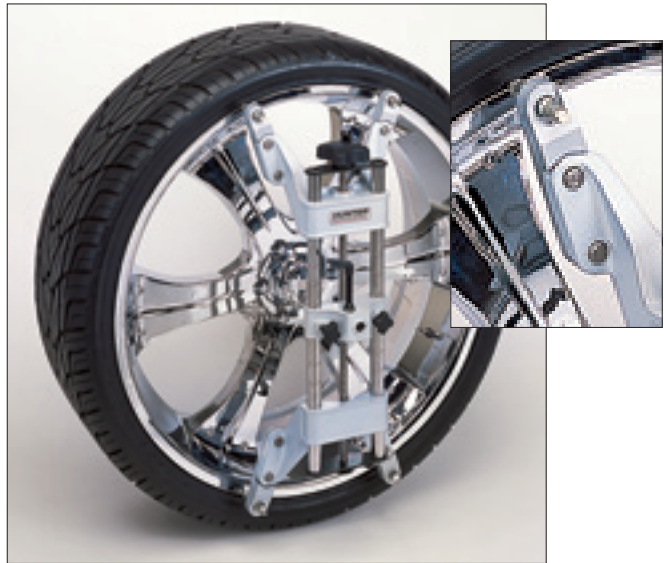


20-1792-1 28" Wheel Adaptor Extensions

Extensions increase the Self-Centering Wheel Adaptor's maximum rim range from 24.5" (622 mm) to 28" (711 mm). Compatible with 175-321-1 and 175-325-1 Self-Centering Adaptors.



(Kit 20-1792-1 contains 16 pieces, four for each adaptor.)



175-348-1 BMW Quick Clamp Adaptor

Hunter Quick Clamp Adaptor approved by BMW. BMW special adaptors with large tire hooks and 120 mm pins. For use with all HawkEye HS401 and DSP sensors.

175-214-1 BMW Quick Clamp Adaptor

Hunter Quick Clamp Adaptor approved by BMW. BMW special adaptors with large tire hooks and 100 mm pins. For use with all HawkEye HS401 and DSP sensors. **(Replacement only for older installations. For new installations, use 175-348-1.)**

175-349-1 Mercedes-Benz Clamp Adaptor

Hunter Quick Clamp Adaptor approved by Mercedes-Benz. Mercedes-Benz special adaptors with large tire hooks and 100 mm pins. For use with all HawkEye HS401 and DSP sensors.

175-215-1 Mercedes-Benz Clamp Adaptor

Hunter Quick Clamp Adaptor approved by Mercedes-Benz. Mercedes-Benz special adaptors with large tire hooks and 100 mm pins. For use with all HawkEye HS401 and DSP sensors. **(Replacement only for older installations. For new installations, use 175-349-1.)**

20-1867-1 BMW 120 mm Pin Kit

120 mm pins are standard on 175-348-1 Quick Clamp Adaptors. May also be used with 175-214-1 Quick Clamp Adaptors for some specialty wheels with deeper offsets (one kit covers four adaptors).

20-1329-1 Mercedes-Benz 100 mm Pin Kit

Use with Mercedes-Benz Clamp Adaptors 175-349-1 and 175-215-1 (one kit covers one adaptor).

20-1857-1 Long Hooks for Special Adaptors

Long hooks for BMW and Mercedes-Benz Clamp Adaptors. May be used with 175-214-1 and 175-215-1 Clamp Adaptors. Standard on 175-348-1 BMW Quick Clamp Adaptors.

20-1842-1 Adaptor Upgrade Kit for HS401, HS400, DSP600 and DSP400 Sensors

For mounting to sensor columns. Includes four 175-325-1 Self-Centering Adaptors (clamping range 10" - 24.5"), four storage brackets and mounting hardware.

20-1841-1 Adaptor Upgrade Kit for HS401, HS400, DSP600 and DSP400 Sensors

For mounting to aligner cabinet or wall. Includes four 175-325-1 Self-Centering Adaptors (clamping range 10" - 24.5"), four storage brackets and 20-1822-1 Instrument Support Adaptor Plate Kit.

20-1097-1 Wheel Adaptor Extensions

Increases maximum wheel diameter on Self-Centering Adaptors by 2 1/2 inches. Compatible with Self-Centering Adaptors 175-200-1, 175-285-1, 175-304-1 and 175-305-1.

**20-1898-1
Rim Stud Retainers**

Rim Stud Retainers for mounting adaptors. Compatible with all current production slip-on spade sleeves. Standard and compatible only with 175-321-1 and 175-325-1

Self-Centering Adaptors (one kit covers two adaptors).



20-823-1 Rim Stud Extension Kit

Includes eight Rim Stud Extensions (134-81-1) (one kit covers two adaptors).



20-1522-1 Spade Sleeve Kit

Includes eight Rim Guard Tire Sleeves (106-118-2) (One kit covers two adaptors).



20-831-1 Spade Sleeve Kit

Includes eight Rim Stud Sleeves (106-70-2). Standard with 175-34-1 and 175-325-1 Self-Centering Adaptors (one kit covers two adaptors).



20-551-1 Spade Sleeve Kit

Includes eight Rim Stud Sleeves (106-70-2) and eight Storage Plug Assemblies (one kit covers two adaptors).



20-1688-1 Additional Rim Stud Retainers

For 16" - 20" wheel adaptors. Includes eight Rim Stud Retainers (one kit covers two adaptors).



20-1578-1 Mag Wheel Short Kit

Includes four Mag Assembly Adaptors (175-63-3) (One kit covers one adaptor).



20-550-1 Rubber Pad Sleeve Kit

Includes four each of the following: 175-37-3 Mag Assembly Adaptor and 175-63-3 Mag Assembly Adaptor (one kit covers two adaptors).



20-1770-1	Instrument Support Kit	Set of four brackets mount to DSP600 or DSP400 columns. The brackets will hold self-centering wheel adaptors and sensors/targets (not suitable for cordless sensors). Compatible only with 175-321-1 and 175-325-1 Self-Centering Adaptors.
20-1762-1	Instrument Support Adaptor Plate Kit	Set of four adaptor plates allow DSP500 hangers to be mounted to alignment cabinets that only have mounting holes for older, horseshoe-style sensor supports. Does not include DSP500 Sensor hangers.
20-1899-1	Instrument Support Kit	For use with Mercedes-Benz and BMW Quick Clamp Adaptors and DSP500 Sensors.
20-1427-1	Instrument Support Kit	Set of four brackets mount to two-post and four-post Hunter lift rack columns. The brackets will hold self-centering wheel adaptors and sensors/targets (not suitable for cordless sensors). Compatible only with 175-200-1, 175-285-1, 175-304-1 and 175-305-1 Self-Centering Adaptors.
20-1822-1	Instrument Support Adaptor Plate Kit	Set of four adaptor plates allow 20-1770-1 Bracket Kit to be mounted to walls or alignment cabinets. Does not include 20-1770-1 Kit.
20-1900-1	Instrument Support Kit	For use with Mercedes-Benz and BMW Quick Clamp Adaptors and HawkEye HS401 and DSP600 Sensors.
20-1446-1	Safety Hook Assembly	Set of four, compatible with 39-22-1, 39-25-1, and 39-44-1 safety cables. Includes four Safety Cable Hook Assemblies (216-58-1).
20-2193-1	Instrument Support Kit	Set of four adaptor plates allow HS401 or HS400 hangers to be mounted to walls or alignment cabinets. Does not include sensor hangers.
20-2187-1	Instrument Support Plate Kit	Set of four brackets mount to HS401 or HS400 columns. The brackets will hold self-centering wheel adaptors and sensors/targets (not suitable for cordless sensors). Compatible only with 175-321-1 and 175-325-1 Self-Centering Adaptors.

Sensor Accessories

20-1960-1	HS401CM and DSP600CM Anchor Plate Kit	Floor-mounted Anchor Plate Kits may be used to position the cabinet and sensors in each bay. The HS401CM and DSP600CM configurations are shipped with one set of Anchor Plates.
20-1832-1	Five Position Battery Charger	Provides a charging station for up to five DSP500 Sensor batteries. The charger can be mounted in "S" (compact), "R" (large) cabinets built after September 2003 or as a free standing charger using the AC Conversion Kit (20-1864-1).
20-1864-1	AC Conversion Kit	Allows the Five Position Battery Charger (20-1832-1) to be used as a free-standing charger without using the aligner power supply.
20-1488-1	Auxiliary DSP Sensor Charging Station	Provides a second charging station where cordless sensors and HS401, DSP600 or DSP400 Sensors are being used with the same console.
194-18-2	Cordless Sensor Battery	For DSP200 and DSP300 Sensors.
194-23-2	Cordless Sensor Battery	For DSP500 Sensors, 30-418-1 Cordless Plus Remote Indicator and 30-421-1 Icon Remote Cordless Remote Indicator.

Alignment Tools, Kits & Accessories

Drawer Organizer Kit



20-2199-1 Drawer Organizer Kit

Provides dividers and tool and part organizers for the drawers on WA245, WA244, R811P and R611P consoles. Does not include 20-1561-3 Alignment Tool Kit or 20-1575-3 Shim/Bushing/CAM Assortment.

** Drawer Organizer Kit requires a four-week lead time.*



Shim/Bushing/CAM Assortment

20-1575-3 Shim/Bushing/CAM Assortment

This kit contains many of the more commonly used shim, bushing and CAM correction kits. Kit includes:



- RP5-42-778** 1997-2003 F150 DEG CAM BOLT 2-1/2 (2 EA.)
- RP5-42-951** CAST/CAMB BUSHING 1/4 (1 EA.)
- RP5-42-952** CAST/CAMB BUSHING 1/2 (1 EA.)
- RP5-42-953** CAST/CAMB BUSHING 3/4 (1 EA.)
- RP5-42-954** CAST/CAMB BUSHING 1 (1 EA.)
- RP5-42-955** CAST/CAMB BUSHING 1-1/4 (1 EA.)
- RP5-42-956** CAST/CAMB BUSHING 1-1/2 (1 EA.)
- RP5-42-957** CAST/CAMB BUSHING 1-3/4 (1 EA.)
- RP5-42-958** CAST/CAMB BUSHING 2 (1 EA.)
- RP5-42-959** CAST/CAMB BUSHING 2-1/4 (1 EA.)
- RP5-42-960** CAST/CAMB BUSHING 2-1/2 (1 EA.)
- RP5-42-961** CAST/CAMB BUSHING 2-3/4 (1 EA.)
- RP5-44-5001** 4WD BUSHING (1 EA.)
- RP5-44-5002** 4WD BUSHING (1 EA.)
- RP5-44-5003** 4WD BUSHING (1 EA.)
- RP5-44-5004** 4WD BUSHING (1 EA.)
- RP5-44-5005** 4WD BUSHING (1 EA.)
- RP5-44-5006** 4WD BUSHING (1 EA.)
- RP5-44-5007** 4WD BUSHING (1 EA.)

- RP5-44-5008** 4WD BUSHING (1 EA.)
- RP5-44-5009** 4WD BUSHING (1 EA.)
- RP5-44-5010** 4WD BUSHING (1 EA.)
- RP5-44-768** SHIM EXPLORER/RANGER (1 EA.)
- RP5-44-786** SHIM 2003 EXPEDITION (1 EA.)
- RP5-44-789** SHIM 2004 F150 (1 EA.)
- RP5-44-792** SHIM 2003 DODGE 1/2-TN. TRUCKS (1 EA.)
- RP5-41-147** KIT-MAGNA CAM 12MM (1 EA.)
- RP5-41-157** HEAVY-DUTY 9/16-IN. MAGNA CAM (1 EA.)
- RP5-41-158** KIT-MAGNA CAM 14MM (1 EA.)
- RP5-41-160** KIT-MAGNA CAM 16MM (1 EA.)
- RP5-46-2100** UNIVERSAL BLUE SHIM [0 – 1-1/2] (2 EA.)
- RP5-46-2200** UNIVERSAL WHITE SHIM [0 – 1-1/2] (2 EA.)
- RP5-46-2300** UNIVERSAL GRAY SHIM [0 – 1-1/2] (2 EA.)
- RP5-46-2400** UNIVERSAL BURG. SHIM [0 – 1-1/2] (2 EA.)
- RP5-46-1121** SHIM-1/4 DEGREE GREEN (1 EA.)
- RP5-46-1122** SHIM-1/2 DEGREE GREEN (1 EA.)
- RP5-46-1123** SHIM-3/4 DEGREE GREEN (1 EA.)
- RP5-46-1124** SHIM-1 DEGREE GREEN (1 EA.)

Alignment Tool Kit



RP5-88-343



RP5-88-1110



RP5-88-7099



RP5-88-7101



RP5-88-7102



RP5-88-7103



RP5-88-7201



RP5-88-7203



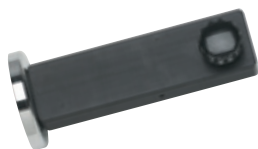
RP5-88-7491



RP5-88-8923



RP5-88-9200



RP5-88-9480

20-2198-3 Alignment Tool Kit

This kit contains many of the more commonly used correction tools. Kit includes:

- RP5-88-343** Full contact/dual angle rear shim tab cutting tool works equally well on both the original design or the new SYSTEM 2000 universal design
- RP5-88-1110** 3/8-in. drive bolt/nut remover
- RP5-88-7095** Tie rod adjuster for compact vehicles (not shown)
- RP5-88-7096** Tie rod adjuster for full-size vehicles (not shown)
- RP5-88-7097** Lt. truck tie rod tool for 1/2-in. drive (not shown)
- RP5-88-7098** Toe adjuster for Ford Super-Duty (not shown)
- RP5-88-7099** Tie rod adjusting tool
- RP5-88-7101** Tie rod adjuster for Chrysler "LH" models
- RP5-88-7102** Tie rod stabilizer for Chrysler "LH" models
- RP5-88-7103** Tie rod wrench for Chrysler "LH"
- RP5-88-7201** Sleeve adjusting tool
- RP5-88-7203** Sleeve outer wrench for Chrysler "LH"
- RP5-88-7301** Universal Inner Tie Rod Socket (not shown)
- RP5-88-7491** GM upper control arm knock out tool
- RP5-88-8923** GM "W" body rear toe adjuster
- RP5-88-8925** Camaro/Firebird (1994 & newer) caster/camber adjuster (not shown)
- RP5-88-8927** Camber/caster adjusting tool (not shown)
- RP5-88-9200** Taurus/Sable sedan rear toe adjuster
- RP5-88-9480** Magnetic camber change gauge

Console Accessories and System Upgrades

Protective equipment covers are available for P, R, and S mobile cabinet models.

69-788-2 Equipment Cover

For P111/211/411/611 W workbench cabinets.

69-787-2 Equipment Cover

For 211/411/611/611P M mobile cabinet models.

69-1025-2 Equipment Cover

For P411M27, R611/811 and WA large mobile cabinets with conventional passenger-car and truck sensors or targets. This cover will also fit S811 cabinets with conventional truck sensors or targets.

69-1187-2 Equipment Cover

For R811, S811 and WA130 and WA230 mobile cabinets without hangers and sensor or targets.

20-2389-1 Bar Code Reader Storage Tray

Provides a storage tray for a bar code reader cradle, and an alternative mounting for the bar code reader itself.

213-47-2 Convex Mirror

WA15-S Brake Pedal Depressor

28-75-1 Steering Wheel Holder

20-2222-1 Memory Upgrade Kit (512 MB) Provides an additional 512 MB to beige 811 Standard and Plus units.

20-2223-1 Memory Upgrade Kit (1 GB) Provides an additional 1 GB to beige 811 Standard and Plus units.

20-2211-1 Memory Upgrade Kit (1 GB) Provides an additional 1 GB to WA and 811-B Standard and Plus units.



**69-1025-2
Equipment Cover
shown.**



20-2389-1 Bar Code Reader Storage Tray shown.

** Bar code reader not included.*

Wheel Adaptor Storage Cart

20-1922-1 Wheel Adaptor Storage Cart

Hunter's Wheel Adaptor Storage Cart provides convenient access to alignment instruments when you need them and convenient storage when you don't. Storage Cart is compatible with targets and conventional sensors.

**Storage Cart shown
with HawkEye HS401
High-Definition
Targets and adaptors.**



Software Upgrades & Services

20-1970-1 Digital-PHOTO

Provides digital inspection and adjustment photos for new or existing WA100 or 811 consoles with WinAlign 8.X or higher. Standard with WA200 consoles. More than 2,000 vehicle-specific digital photos improve productivity by quickly identifying adjustment and inspection points.

20-1971-1 Combination Digital-PHOTO/VIDEO

Provides digital inspection and adjustment photos for new or existing WA100 or 811 consoles with WinAlign 8.X or higher. Standard with WA200 consoles. See and hear more than 100 live videos covering vehicle adjustments, inspection of components, use of special tools, installation of after-market correction kits and equipment operation. It's like having a full-time alignment instructor in your shop. Live video instructions cover more than 90% of cars and light trucks sold in the U.S.



WinAlign Custom Alignment for Modified Vehicles **TUNER**

WinAlign Tuner Features Include:

20-2004-1 WinAlign Tuner Kit*

Hunter's WinAlign Tuner software feature provides technicians with the necessary procedures and information to align modified vehicles.

The number of altered ride height vehicles is growing rapidly and presents a very profitable market for shops capable of servicing these specialized vehicles. Hunter WinAlign Tuner Software, hardware and procedures enable your shop to align altered ride height or "tuner" vehicles and increase your shop's profitability.

WinAlign Tuner Software is an optional feature of WinAlign® Software. Additional hardware is required, see Form 5118-T for more information.

* WinAlign Tuner is standard with WA200 and 811 Plus consoles

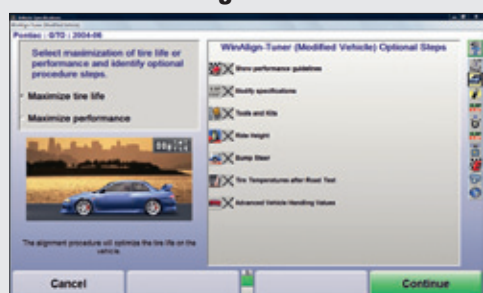
20-2011-1 Bump Steer Winch Kit

Hunter's optional Bump Steer Winch and Laser Scale enables the technician to detect bump steer while safely pulling the vehicle down at varying increments to record height change measurements. Includes bridge, winch and laser scale.

Requires WinAlign Software version 8.1 or higher.

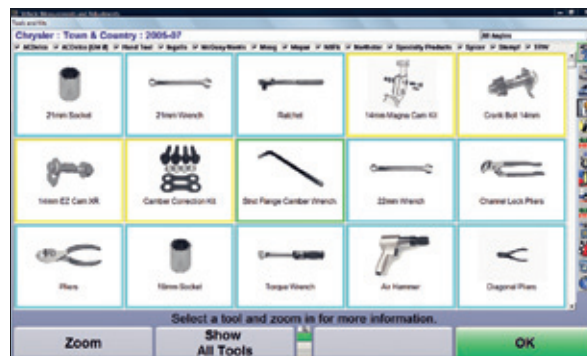


20-2005-1 WinAlign Plus Kit



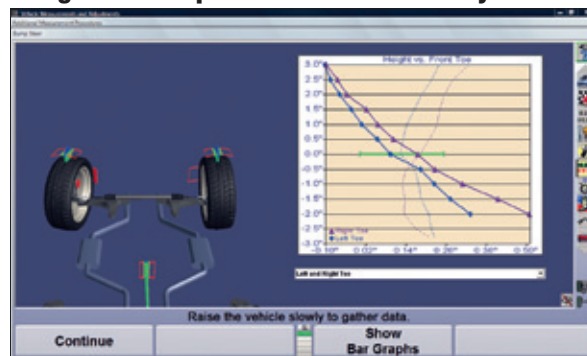
Provides PHOTO/VIDEO on DVD and WinAlign Tuner for new or existing WA100 and 811 consoles with WinAlign 8.1 or higher. **These features are standard on WA200 consoles.**

Enhanced Tools and Kits



Tools and Kits enables the technician to not only view the parts necessary for modification and alignment, but also access the parts manufacturers' websites.

Integrated Bump Steer Measurement System



Camber, toe, total toe and steer ahead are measured and may be recorded as the vehicle is raised and lowered. The results are charted on-screen to allow the technician to see the change in values through a range of heights and compare values before and after modification.

Electronic Vehicle Ride Height Measurement



This WinAlign Tuner software procedure measures and saves the changes in vehicle height after lowering or raising the vehicle to view cross ride height. Can be used manually or with Hand-Held Ride Height Remote.

WebSpecs®.NET Specification Database

Use Your Hunter Aligner or Front-Office Computer to Get New Vehicle Specifications via the Internet...

WebSpecs.NET database provides the newest vehicle specifications, Adjustment Illustrations and optional Digital Photos from an internet-connected Hunter aligner or any Internet-connected computer in the shop. Updated vehicle specs are available online throughout the year. The newest vehicle specifications are available on WebSpecs.NET soon after release by the OEMs. Standard on all WA consoles.



20-1699-1 WebSpecs Database

Upgrades the current Factory Spec key to a WebSpecs key, which authorizes WebSpecs and Factory Specs. Retains spec year version from currently installed spec key. (Standard on all WA consoles.)

TPMSpecs™ Now Available on WebSpecs.Net*

TPMS data is available on the web via Hunter's WebSpecs vehicle information database. The database can be accessed using an internet-capable Hunter aligner or shop computer with an internet connection.



ShopResults.NET® Online Service

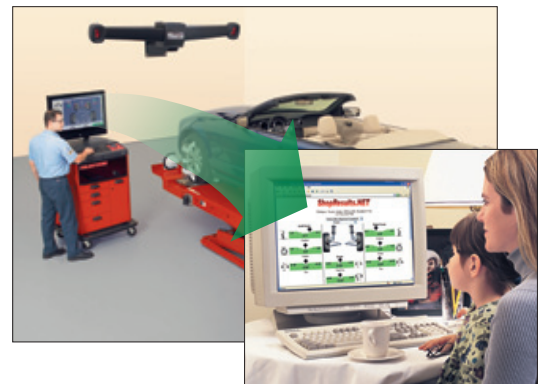
ShopResults.NET® service provides you with an efficient internet-based method to communicate with vehicle owners and business partners, store and retrieve alignment records and even produce management reports.

20-1756-1 ShopResults.NET® 3-Year Subscription

(1-year subscription is standard with WA200 consoles)

20-1755-1 ShopResults.NET® 1-Year Subscription

(1-year subscription is standard with WA200 consoles)



UnderCarInfo.NET Subscription

UnderCarInfo.NET software feature assists counter service personnel when explaining needed service. Much of the same extensive vehicle information database that is available on Hunter's premium alignment systems can now be accessed using any internet-connected PC. It's as simple as going to the UnderCarInfo.NET Website and entering a user ID and password.

20-1757-1 UnderCarInfo.NET 1-Year Subscription

(1-year subscription is standard with WA200 consoles)

20-1758-1 UnderCarInfo.NET 3-Year Subscription

(1-year subscription is standard with WA200 consoles)



Hunter Networking Accessories

20-1760-1 Network Kit

Connects a Hunter aligner to a customer's network. Available for WA100 and 811 consoles. Standard on WA200 consoles.

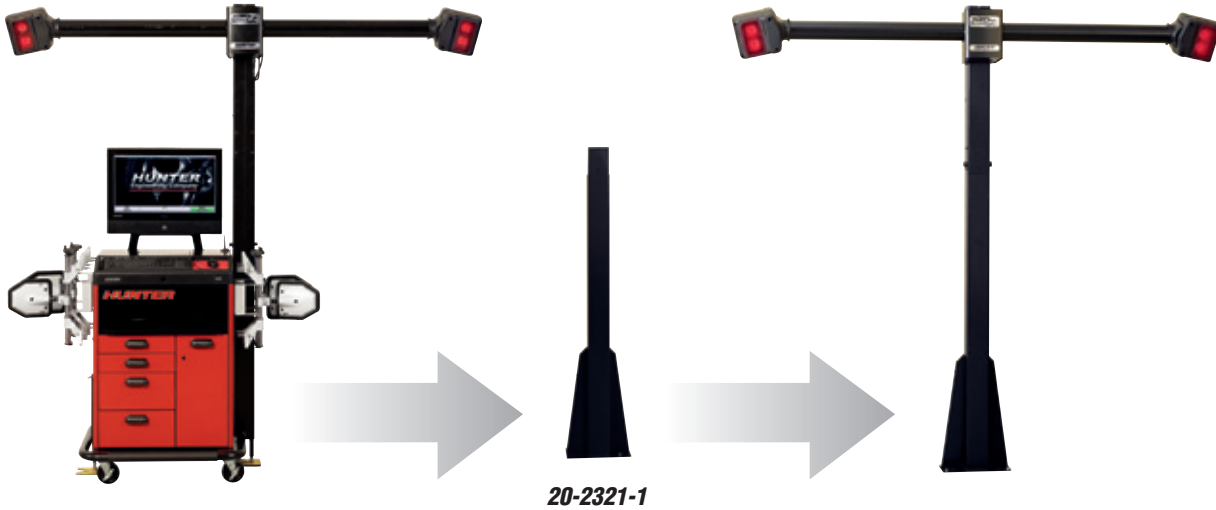
20-2195-1 Wireless Network Kit

Connects WA100 or 811 consoles to a shop's existing 802.11 a/b/g wireless network. Standard on WA200 consoles.

20-2321-1 HS401CM to Stand Alone Mount Conversion Kit (Black)

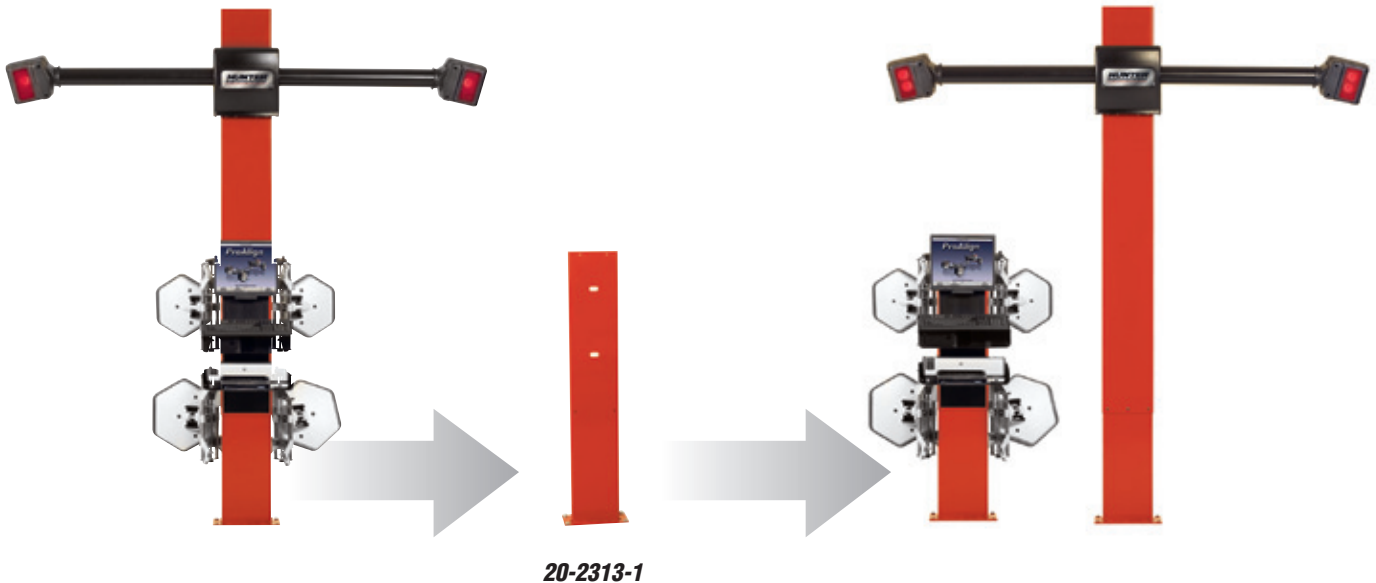
20-2320-1 HS401CM to Stand Alone Mount Conversion Kit (Red)

Two Stand Alone Mount (SAM) conversion kits are available to convert a HS401CM with a movable camera boom from cabinet mount to a floor stand alone mount.



20-2313-1 PA Alternative Mounting base for Pronto and PA121

The floor mounted base holds a Pronto or a PA121 console and wheel adaptors with targets



For detailed information on models, cabinets and accessories, contact your Hunter representative.

Hunter, ShopResults.NET, WebSpecs, HawkEye, WinAlign and WinAlign Tuner are trademarks of Hunter Engineering Company.

HUNTER
Engineering Company

www.Hunter.com

Form 5414-T, 03/10
Supersedes 5414-T, 04/09

