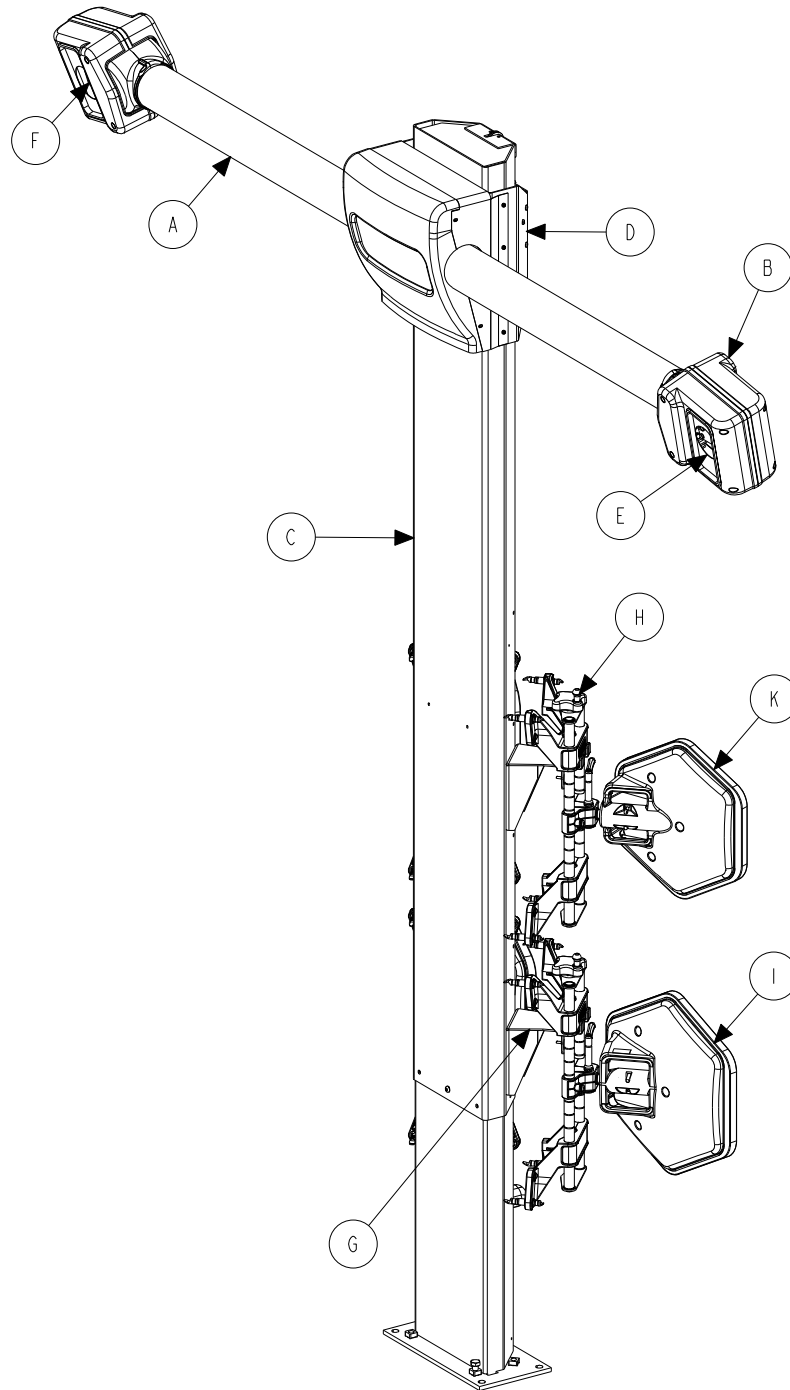


HS200ML AND HS201ML SENSORS

© 2009 Hunter Engineering Company

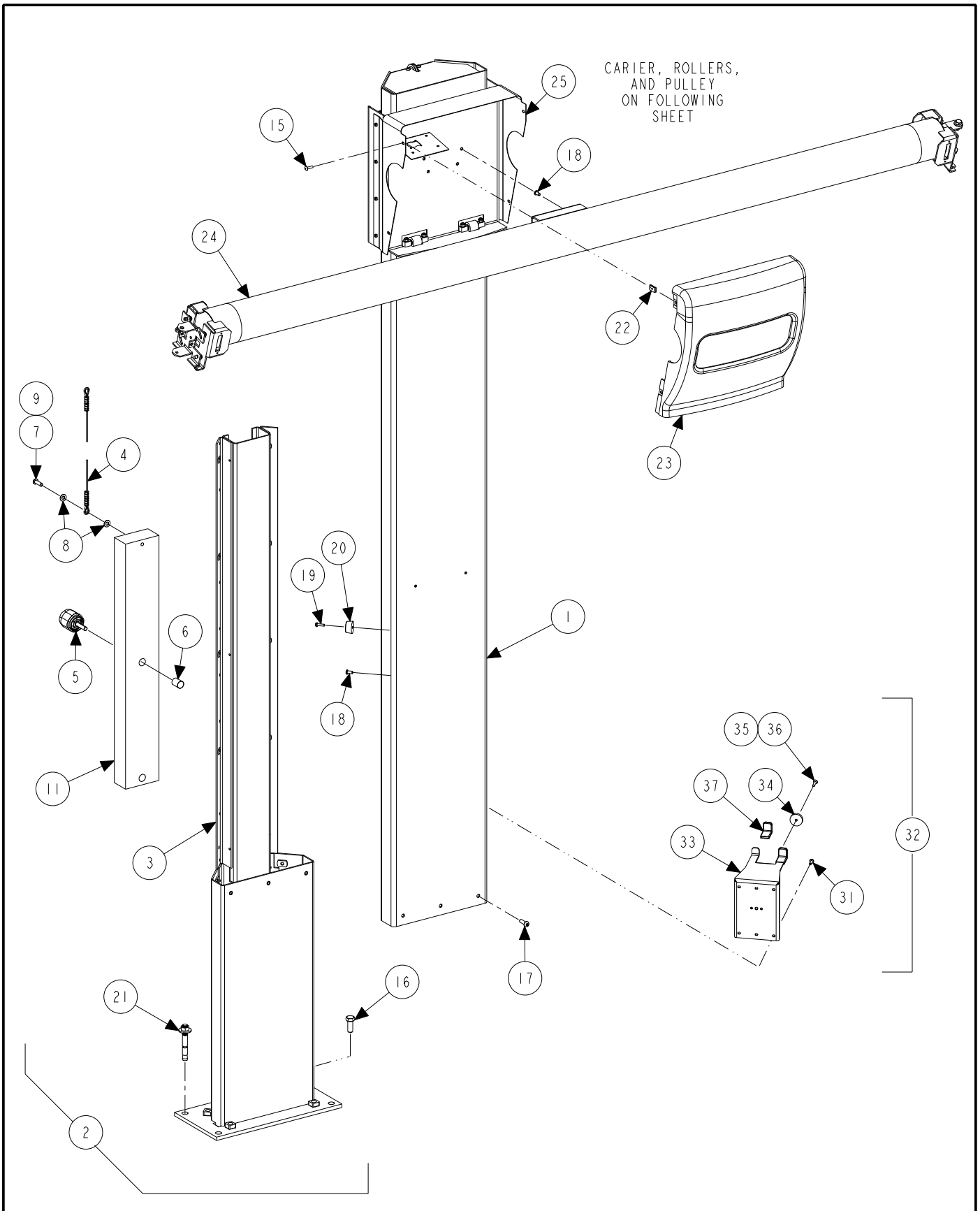


HS200ML AND HS201ML SENSORS
REFER TO NEXT SHEET FOR PARTS DESCRIPTION LISTING

PARTS DESCRIPTION LISTING

Index No.	Part Number	Description
A	16-889-1	TUBE ASSEMBLY, CAMERA SUPPORT CM (See Sheet 5)
B	69-1063-1	COVER, ASSEMBLY BACK DSP600 (See Sheet 5)
C	233-73-1-PPP	POST, TWO CAMERA UPPER WELD (See Sheet 3)
D	56-64-1	CARIER, TWO CAMERA - ML (See Sheet 4)
E	125-412-1	SENSOR, HS200 RIGHT CAMERA ASSEMBLY (See Sheet 5)
OR	125-414-1	SENSOR, HS201 RIGHT CAMERA IBIS (See Sheet 5)
F	125-411-1	SENSOR, HS200 LEFT CAMERA ASSEMBLY (See Sheet 5)
OR	125-413-1	SENSOR, HS201 LEFT CAMERA IBIS (See Sheet 5)
G	11-1345-1	SUPPORT, DUAL POSITION, ADAPTOR MOUNT (See Sheet 3)
H	175-325-1	ADAPTOR, 10 INCH – 24 INCH DSP600/400 (Refer to form 4-110)
I	214-112-1	TARGET ASSEMBLY, REAR PLASTIC RIGHT-HAND (See Sheet 6)
J	214-113-1	TARGET ASSEMBLY, REAR, PLASTIC LEFT-HAND (See Sheet 6)
K	214-114-1	TARGET ASSEMBLY, FRONT, PLASTIC RIGHT-HAND (See Sheet 6)
L	214-115-1	TARGET ASSEMBLY, FRONT, PLASTIC LEFT-HAND (See Sheet 6)

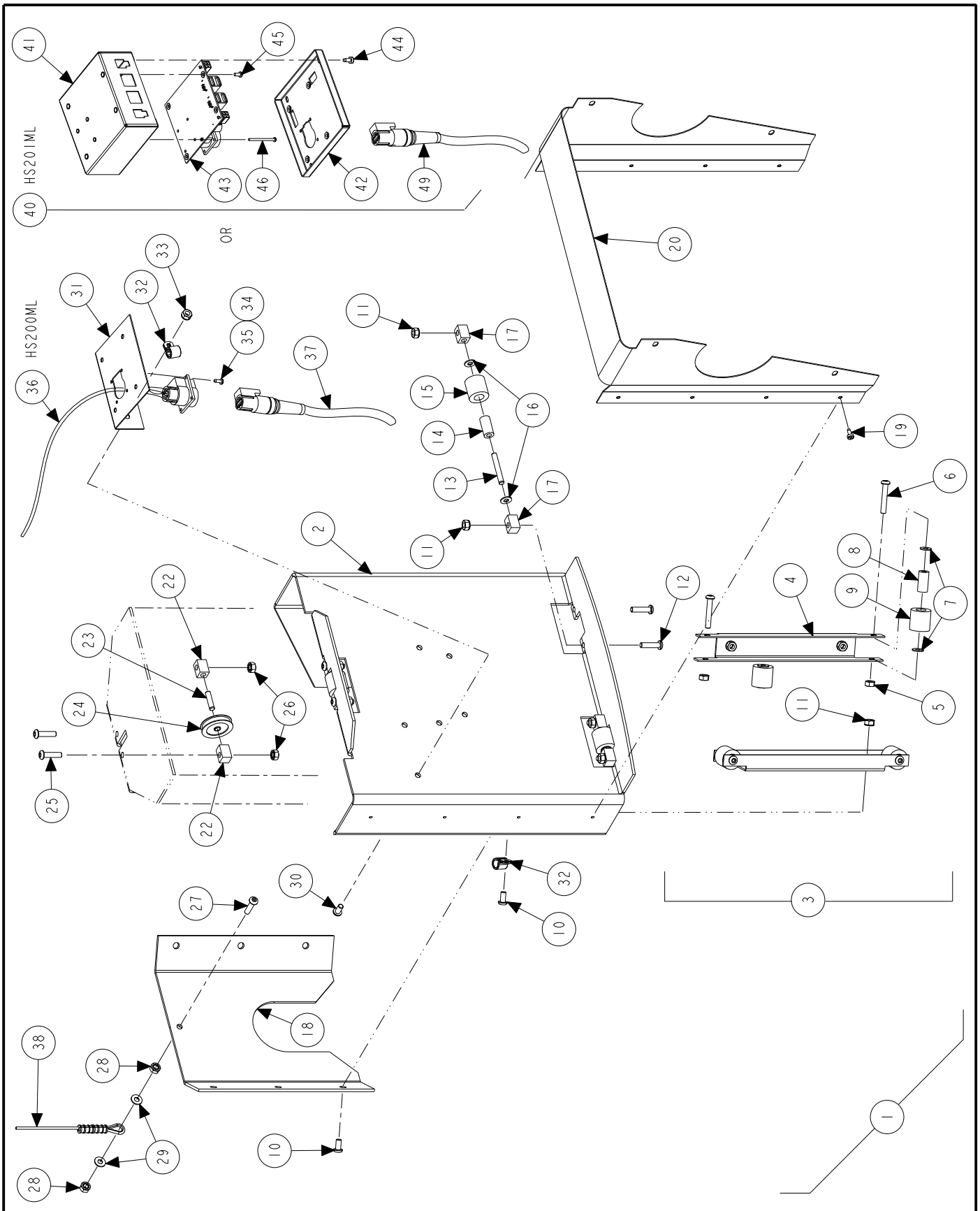
CARRIER, ROLLERS,
AND PULLEY
ON FOLLOWING
SHEET



HS200ML AND HS201ML SENSORS
REFER TO NEXT SHEET FOR PARTS DESCRIPTION LISTING

PARTS DESCRIPTION LISTING

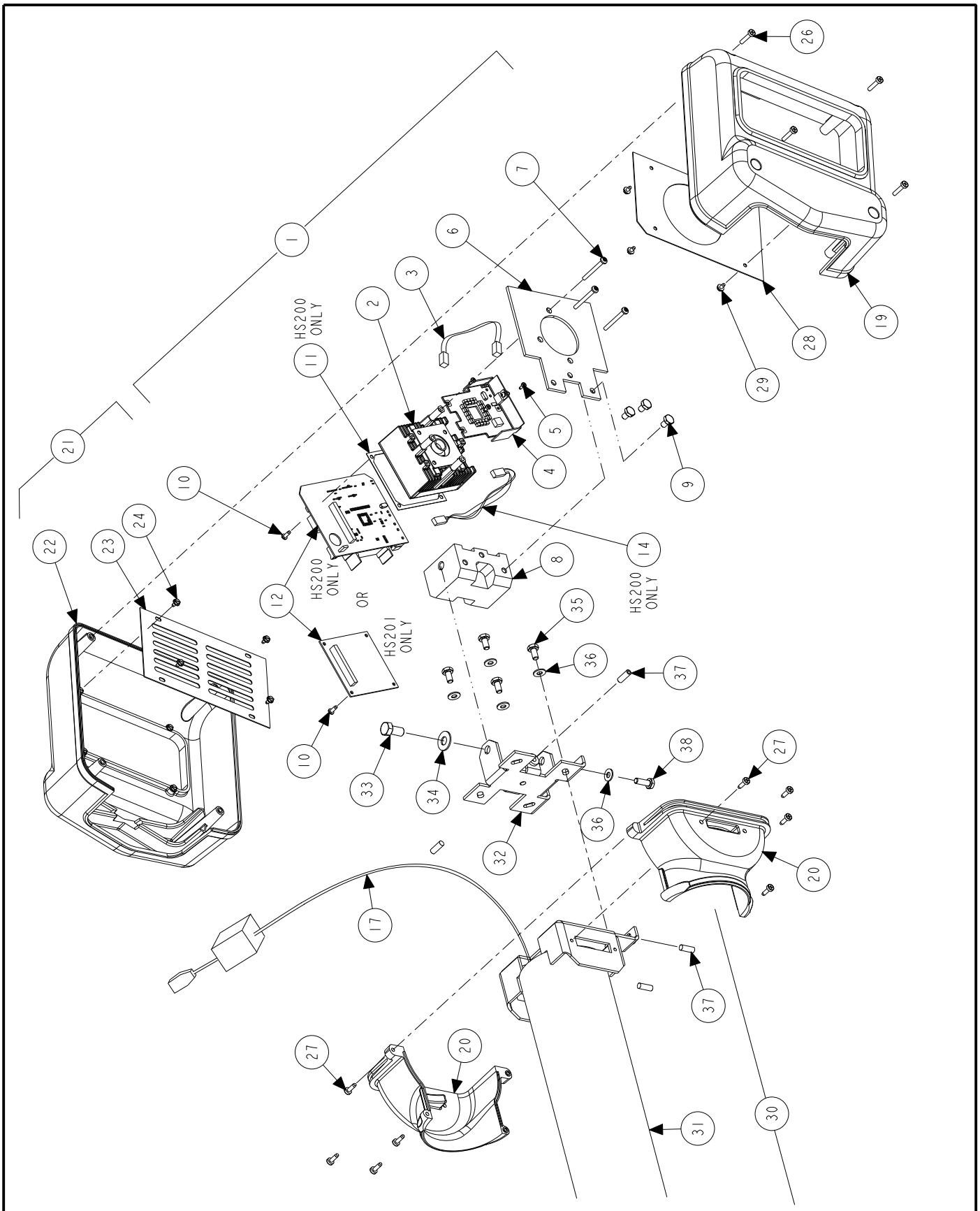
Index No.	Part Number	Description	Qty.
1	233-73-1-PPP	POST, TWO CAMERA UPPER WELD	1
2	233-74-1	POST, TWO CAMERA LOWER (Consisting Of:)	1
3	233-71-1-PPP	POST, TWO CAMERA LOWER WELD	1
4	39-80-3	CABLE, TWO CAMERA ML	1
5	34-190-2	KNOB, CARRIER COUNTER BALANCE CM	1
6	42-45-2	PLUG, FRICTION COUNTER BALANCE CM	1
7	74-270-2	SOCKET BUTTON HEAD CAP SCREW 5/16-18 X 1.00 INCH FULL-THREAD	1
8	77-20-2	WASHER, FLAT 5/16 INCH	2
9	162-35-2	ADHESIVE, THREAD LOCKING	A/R
10	94-13-2	TIE, CABLE (Not Illustrated)	4
11	65-91-2	WEIGHT, HS ML	1
12	24-51-2	NAMEPLATE, HUNTER MODEL & PART (Not Illustrated)	1
13	24-54-2	NAMEPLATE, PATENT LABEL (Not Illustrated)	1
14	20-2326-1	KIT, TWO CAMERA ML HARDWARE (Consisting Of:) (Not Illustrated.)	1
15	75-695-2	TRUSS HEAD MACHINE SCREW - 10-24 X .75 INCH	4
16	74-11-2	HEX HEAD CAP SCREW 1/2-13 X 1.25 INCH GRADE 5, FULL-THREAD	4
17	74-270-2	SOCKET BUTTON HEAD CAP SCREW 5/16-18 X 1.00 INCH, FULL-THREAD	5
18	75-481-2	SOCKET BUTTON HEAD CAP SCREW 1/4-20 X .50 INCH	12
19	75-408-2	SCREW, SELF-TAPPING 10-32 X .75 INCH	3
20	62-21-2	FOOT, PLASTIC	3
21	74-169-2	BOLT, ANCHOR 1/2 X 3 3/4 INCH	4
22	76-448-2	NUT, TINNEMAN U-TYPE #10-24	4
23	69-1297-3	COVER, COLUMN TWO CAMERA ML	1
24	16-889-1	TUBE ASSEMBLY, CAMERA SUPPORT CM (See Sheet 5)	1
25	56-64-1	CARRIER, TWO CAMERA-ML (See Sheet 4)	1
26	20-2375-1	HAWKEYE, ADAPTOR-SUPPORT, LIFT-MOUNT (Consisting Of:) (Not Illus.)	1
27	62-50-2	FOOT, 1/4 INCH RUBBER 1.25 INCH DIAMETER (For Lift Mnt.) (Not Illus.)	4
28	76-17-2	NUT, GRIP 1/4-20 (For Lift Mnt.) (Not Illus.)	4
29	75-728-2	HEX HEAD CAP SCREW, 1/4-20X1.25 INCH GRADE 5 (For Lift Mnt.) (Not Illus.)	4
30	76-477-2	NUT, 1/4-20 RECTANGULAR (For Lift Mnt.) (Not Illus.)	4
31	75-408-2	SCREW, SELF-TAPPING 10-32X.75 INCH	16
32	11-1345-1	SUPPORT, DUAL POSITION-ADAPTOR MOUNT (Consisting Of:)	4
33	11-1347	SUPPORT, DUAL POSITION MOUNT	1
34	62-50-2	FOOT, 1/4 INCH RUBBER 1.25 INCH DIAMETER	1
35	75-93-2	FLAT HEAD SOCKET CAP SCREW 10-32 X 1.00 INCH	1
36	76-61-2	NUT-KEPS 10-32	1
37	106-168-2	SLEEVE, RECTANGLAR 10 GAUGE	2



HS200ML AND HS201ML SENSORS
 REFER TO NEXT SHEET FOR PARTS DESCRIPTION LISTING

PARTS DESCRIPTION LISTING

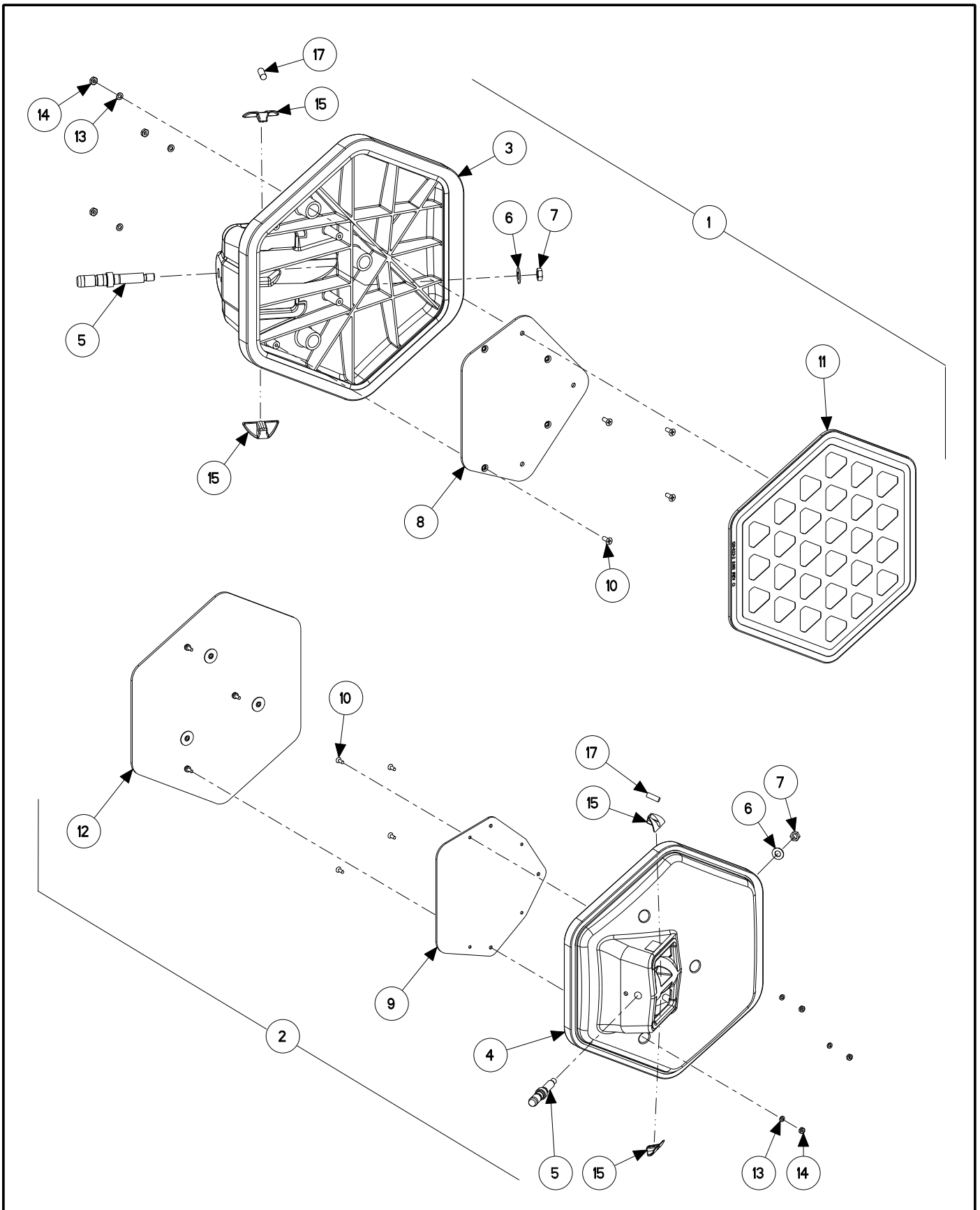
Index No.	Part Number	Description	Qty.
1	56-64-1	CARIER, TWO CAMERA ML (Consisting Of:)	1
2	56-63-005	CARIER, TWO CAMERA-FRONT	1
3	14-1204-1	BRACKET, DUAL-ROLLER (Consisting Of:)	2
4	14-1203-005	BRACKET, DUAL-ROLLER-MOUNT	1
5	76-17-2	NUT, GRIP 1/4-20	2
6	75-452-2	SOCKET BUTTON HEAD CAP SCREW 1/4-20 X 1.50 INCH	2
7	77-67-2	WASHER, FLAT 1/4 INCH	4
8	113-275-2	BUSHING, 3/8 ID X 1/2 OD X 3/4 INCH LONG	2
9	111-127-2	ROLLER, REAR CONSOLE MT	2
10	75-481-2	SOCKET BUTTON HEAD CAP SCREW 1/4-20 X .50 INCH	10
11	76-85-2	NUT, KEPS 1/4-20	10
12	75-617-2	SOCKET BUTTON HEAD CAP SCREW 1/4-20 X 1.00 INCH	6
13	135-13-2	PIN, DOWEL	3
14	113-275-2	BUSHING, 3/8 ID X 1/2 OD X 3/4 INCH LONG	3
15	111-127-2	ROLLER, REAR CONSOLE MOUNT	3
16	77-67-2	WASHER, FLAT 1/4 INCH	6
17	121-244-2	BLOCK, SHEAVE UPPER PULLEY CM	6
18	56-62-1-005	CARIER, TWO CAMERA-REAR	1
19	75-543-2	SCREW, SELF-TAPPING 8-32X.38 INCH	8
20	56-65-005	CARIER, TWO CAMERA-COVER-MOUNT	1
21	20-2326-1	KIT, TWO CAMERA ML HARDWARE (Consisting Of:) (Not Illustrated)	1
22	121-244-2	BLOCK, SHEAVE UPPER PULLEY CM	2
23	135-319-2	PIN, DOWELL .25 X 1.00 INCH	1
24	107-121-2	PULLEY, WIRE ROPE, CM	1
25	75-617-2	SOCKET BUTTON HEAD CAP SCREW 1/4-20 X 1.00 INCH	2
26	76-85-2	NUT, KEPS 1/4-20	2
27	75-617-2	SOCKET BUTTON HEAD CAP SCREW 1/4-20 X 1.00 INCH	1
28	76-85-2	NUT, KEPS 1/4-20	2
29	77-67-2	WASHER, FLAT 1/4 INCH	2
30	75-481-2	SOCKET BUTTON HEAD CAP SCREW 1/4-20 X .50 INCH	2
31	14-1205-005	BRACKET, HUB MOUNT	1
32	12-163-2	CLAMP, P CLIP 3/8 INCH ID RUBBER	3
33	76-17-2	NUT, GRIP 1/4-20	2
34	75-31-2	ROUND HEAD MACHINE SCREW 4-40X.38 INCH (For HS200ML Only)	4
35	76-22-2	NUT, HEX 4-40 (For HS200ML Only)	4
36	38-1069-1	CABLE, HS400FC CAMERA CONTROL TO BURNDY (For HS200ML Only)	1
37	38-784-3	CABLE ASSEMBLY, SHIELDED SENSOR (For HS200ML Only)	1
38	39-80-3	CABLE, TWO CAMERA ML	REF.
39	75-446-2	SELF-TAPPING SCREW 8-32 X 3/8 INCH (Not Illus.) (For HS201ML Only)	4
40	67-667-1	BOX, USB HUB BOARD ASM (For HS201ML Only)	1
41	67-666-1	BOX, ASSEMBY USB HUB (For HS201ML Only)	1
42	69-1081-1	LID, ASSEMBY USB HUB (For HS201ML Only)	1
43	45-1023-1	PCA, VCS USB2 HUB (For HS201ML Only)	1
44	75-446-2	SELF-TAPPING SCREW 8-32 X 3/8 INCH (For HS201ML Only)	4
45	75-162-2	ROUND HEAD MACHINE SCREW 6-32 X .31 INCH (For HS201ML Only)	4
46	75-384-2	ROUND HEAD MACHINE SCREW 4-40 X 1.50 INCH LG (For HS201ML Only)	3
47	38-954-2	CABLE, USB 2.0 A/B 2 METER (Not Illustrated) (For HS201ML Only)	REF
48	37-526-1	WIRE ASSEMBY, DSP600L EMITTER PWR (Not Illustrated) (For HS201ML Only)	REF
49	38-957-3	CABLE ASSEMBY, USB+BURNDY (For HS201ML Only)	1



HS200 AND HS201 SENSORS
 REFER TO NEXT SHEET FOR PARTS DESCRIPTION LISTING

PARTS DESCRIPTION LISTING

Index No.	Part Number	Description	HS200 (per side)	HS201 (per side)
1	125-412-1	SENSOR, HS200 RIGHT CAMERA IBIS (Consisting Of:)	1	
OR	125-411-1	SENSOR, HS200 LEFT CAMERA IBIS (Consisting Of:) (Not Illustrated)	1	
OR	125-414-1	SENSOR, HS201 RIGHT CAMERA IBIS (Consisting Of:) (Not Illustrated)		1
OR	125-413-1	SENSOR, HS201 LEFT CAMERA IBIS (Consisting Of:) (Not Illustrated)		1
2	109-136-1	TRANSDUCER, DSP600 FRONT IBIS (Includes:)	1	1
3	37-523-1	WIRE ASSEMBLY, DSP600 EMITTER BOARD	1	1
4	45-1129-1	PCA, DSP600 750NM EMITTER SMT	1	1
5	75-324-2	SCREW, SELF-TAPPING 4-40 X 1/4 INCH	3	3
6	14-1127-1	BRACKET, 2 CAMERA SUPPORT RIGHT ASSEMBLY	1	1
OR	14-1126-1	BRACKET, 2 CAMERA SUPPORT LEFT ASSEMBLY (Not Illustrated)	1	1
7	75-698-2	SCREW, SELF TAPPING 8-32 TRILOB	3	3
8	121-240-2	BLOCK CAMERA MOUNT HS200	1	1
9	75-41-2	HEX HEAD CAP SCREW 1/4 - 20 x .38 INCH, FULL-THREAD	3	3
10	75-500-2	SCREW, SELF TAPPING 6-32 x 3/8 INCH	4	4
11	49-76-2	GASKET, CAMERA BOARD (For HS200 Only)	1	
12	45-1193-1	PCA, HS400 CAMERA CONTROL (For HS200 Only)	1	
OR	45-1013-1	PCA, USB2 CAMERA INTERFACE (For HS201 Only)		1
13	21-204-2	CONNECTOR .1 2 CIRCUIT JUMPER (Not Illustrated) (For HS200 Only)	1	
14	38-1067-1	CABLE, HS400 CAMERA CONTROL TO EMMITER POWER (For HS200 Only)	1	
15	24-54-2	NAMEPLATE, PATENT LABEL (Not Illustrated)	1	1
16	24-51-2	NAMEPLATE, HUNTER MODEL AND PART (Not Illustrated)	1	1
17	38-1068-1	CABLE, HS400 CAMERA CONTROL TO CAMERA CONTROL (HS200ML Only)	1	
AND	38-1069-1	CABLE, HS400FC CAMERA CONTROL TO BURNDY (Not Illus.) (HS200ML Only)	REF.	
OR	38-954-2	CABLE, USB 2.0 A/B 2METER (Not Illus.) (HS201ML Only)		1
AND	37-526-1	WIRE ASSEMBLY, DSP600L EMITTER POWER (Not Illus.) (HS201ML Only)		1
18	38-784-3	CABLE ASSEMBLY, SHIELDED SENSOR (See Sheet 4) (Not Illus.) (HS200ML Only)	REF.	
OR	38-957-3	CABLE ASSEMBLY, USB+BURNDY (See Sheet 4) (Not Illus.) (HS201ML Only)		REF.
19	69-1061-2	COVER, CAMERA DSP600	1	1
20	69-1064-2	COVER, CAMERA CLEVIS DSP600	2	2
21	69-1063-1	COVER, ASSEMBLY BACK DSP600 (Consisting Of:)	1	1
22	69-1079-3	COVER, CAMERA BACK DSP600	1	1
23	69-1062-005	COVER, CAMERA PLATE	1	1
24	75-362-2	SCREW, SELF-TAPPING 6-32 X .25 INCH	4	4
25	20-2326-1	KIT, TWO CAMERA MANUAL LIFT HARDWARE (Consisting Of:) (Not Illustrated)	1	1
26	75-414-2	PAN HEAD MACHINE SCREW 8-32 X 3/4 INCH	4	4
27	75-441-2	SCREW, SELF-TAPPING 8-32 X .50 INCH	8	8
28	179-62-005	SHIELD, FRONT COVER DSP602	1	1
29	75-362-2	SCREW, SELF-TAPPING 6-32 X .25 INCH	4	4
30	16-889-1	TUBE ASSEMBLY, CAMERA SUPPORT CM (Consisting Of:)		1
31	16-888-1-005	TUBE ASSEMBLY, CAMERA SUPPORT CM		1
32	178-33-1-005	COUPLER, CAMERA DSP600 WELD		2
33	74-59-2	HEX HEAD CAP SCREW 3/8-16 X .75 INCH, FULL-THREAD		2
34	77-65-2	WASHER, FLAT 3/8 INCH, SPECIAL		2
35	75-23-2	HEX HEAD CAP SCREW 1/4-20 X .50 INCH FULL-THREAD		8
36	77-67-2	WASHER, FLAT 1/4 INCH		10
37	75-241-2	SOCKET SET SCREW 1/4-20 X 3/4 INCH, OVAL POINT		8
38	75-29-2	HEX HEAD CAP SCREW 1/4-20 X .75 INCH, FULL-THREAD		2



HS200 SENSORS

REFER TO NEXT SHEET FOR PARTS DESCRIPTION LISTING

PARTS DESCRIPTION LISTING

Index No.	Part Number	Description	Front Targets	Rear Targets
1	214-115-1	TARGET ASSEMBLY, FRONT PLASTIC LH (Consisting Of:)	1	
OR	214-114-1	TARGET ASSEMBLY, FRONT PLASTIC RH (Not Illustrated)	1	
2	214-112-1	TARGET ASSEMBLY, REAR PLASTIC RH (Consisting Of:)		1
OR	214-113-1	TARGET ASSEMBLY, REAR PLASTIC LH (Not Illustrated)		1
3	105-376-3	HOUSING-FRONT WITH BUMPER	1	
4	105-380-3	HOUSING-REAR WITH BUMPER		1
5	97-485-2	SHAFT, DSP600 TARGET	1	1
6	77-26-2	WASHER, FLAT 3/8 INCH	1	1
7	76-34-2	NUT, JAM 3/8-24	1	1
8	51-1714	PLATE, BACKUP FRONT	1	
9	51-1715	PLATE, BACKUP REAR		1
10	75-573-2	FLAT HEAD SHEET METAL SCREW 10-16 X .5 INCH	4	4
11	214-109-1	TARGET ASSEMBLY, FRONT 1.86	1	
12	214-104-1	TARGET ASSEMBLY, REAR 2.22		1
13	77-276-2	WASHER, SPRING CURVED #10	3	3
14	76-263-2	NUT, LOCK 10-32 NYLON INSERT	3	3
15	105-369-2	HOUSING, LEVEL TARGET	2	2
16	128-970-2	DECAL, DSP400 TARGET WARNING (Not Illustrated)	1	1
17	221-631-2	TOOL LEVEL, DSP400 TARGET	1	1